



Nanjing Cngeir Technology Co.,Ltd.

CNGEIR

Infrared Optoelectronics Whole Industry Chain Products Supplier

CATALOG

01	Company Profile	03
02	History	04
03	Qualification	05-06
04	Product Introduction	07-32
	1). Infrared Materials	07
	2). Infrared Optics	08-09
	3). Optical Dome	10
	4). Uncooled LWIR Lens	11-26
	5). Cooled LWIR Lens	27
	6). Cooled MWIR Lens	28-29
	7). Uncooled Module	31
	8). Cooled Module	32
05	Application	33-34
06	Production Facility	35-36
07	Testing Facility	37-38

01 Company Profile

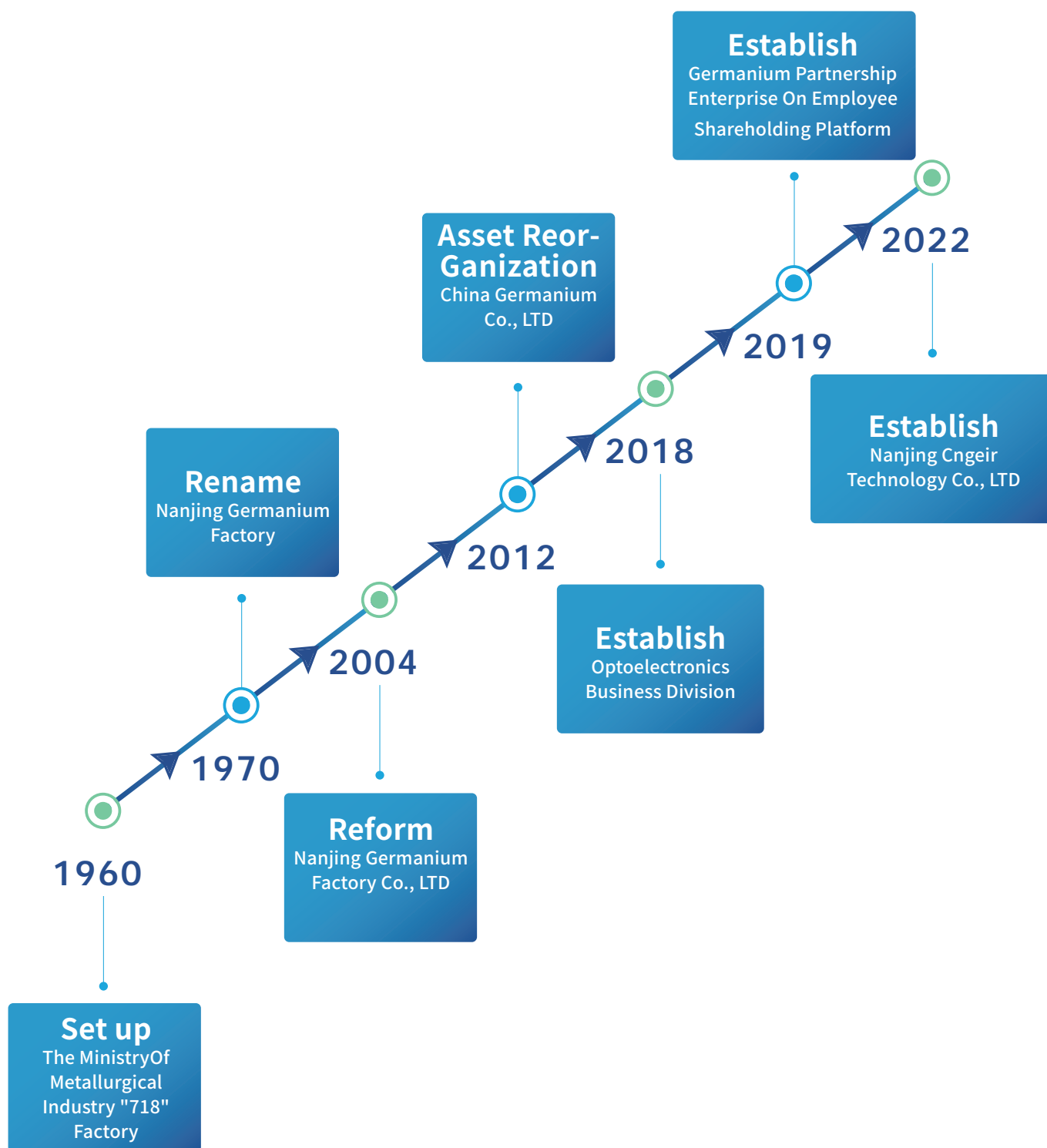
Nanjing Cngeir Technology Co., Ltd. (referred to as "Nanjing Cngeir") is an excellent provider of infrared optoelectronics products for the entire industry chain. It was formerly the Nanjing "718" Factory of the former Ministry of Metallurgical Industry. It was established in May 1960. In 2012, it completed a major asset reorganization and was transformed into a private enterprise. The company's factory is located in Lishui Economic Development Zone, Nanjing City. The factory covers an area of 120,000 m² and currently has more than 300 employees. As Nanjing, Located in the center of China, it has multiple sales services in Europe, the United States, Japan, South Korea and other places. team, the actual total investment amount exceeds 350 million yuan.

Nanjing Cngeir specializes in R&D, design, production and sales of products with germanium as the core and other infrared optical materials, infrared lenses, infrared optical lenses, optical dome covers, modules, observation and night vision equipment and other products. The company's related products are widely used in military equipment, equipment testing, security, industry, electric power, vehicle, medical, consumer and other fields.

Nanjing Cngeir now has more than 300 sets of advanced manufacturing and testing equipment, more than 100 advanced patented technologies with independent intellectual property rights, and with a technical and R&D team composed of multiple doctors, masters and dozens of related professional engineering and technical personnel. Relying on its nearly 60 years of experience in the infrared industry, advanced technology and complete management systems, as well as its full industry chain production capabilities, the company has provided advanced and high-end infrared optoelectronics "full series" industry integration for the customers in domestic and abroad.



02 / History



03 Qualification



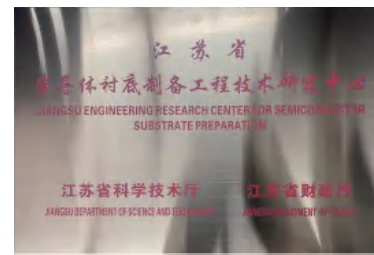
CERTIFICATE OF PATENT



INDUSTRIAL STANDARD



CERTIFICATE OF MANAGEMENT SYSTEM



CERTIFICATE OF HONOR

► Infrared Materials



Ge Crystals	
Diameter (mm)	12mm~380mm
Length (mm)	Customized
Resistivity	0.005Ω~50Ω/cm
Crystal Structure	Single Crystal, Polycrystal
Crystal Purity	99.999%~99.9999%
Conduction Type	N/P
Surface Roughness	Ra max 0.2μm to 4.0μm
Refractive Index at 10.6μm	4.0052
Absorptance at 10.6μm	≤0.035



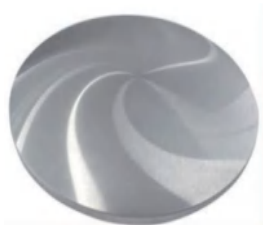
Wafer

Wafer	
Diameter (mm)	3mm~360mm (Single Crystal)
	3mm~380mm (Polycrystal)
Diameter Tolerance	≤0.025mm
Min Thickness	0.3mm
Max Thickness	75mm
Thickness Tolerance	≤0.025mm



Square Piece

Square Germanium Blank	
Maximum Diagonal Size	10mm~330mm
Thickness	Customized
Thickness Tolerance	≤0.02mm



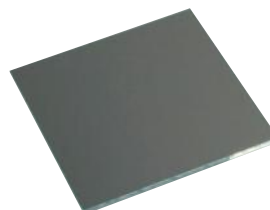
Milling Piece

Square Piece	
Diameter (mm)	7mm~330mm (Single Crystal)
	7mm~350mm (PolyCrystal)
Diameter Tolerance	≤0.03mm
Curvature Radius	△Sag < 0.005
Center Thickness Tolerance	≤0.025mm
Edge Thickness	≤0.03mm

Infrared Optics ◀



Wafer



Square Piece

Flat	
Material	Ge, Si, ZnSe, ZnS, Chalcogenide Glasses
Specification	Customized
Diameter Tolerance	$\leq 0.03\text{mm}$
Curvature Radius	$\Delta \text{Sag} < 0.005$
Center thickness tolerance	$\leq 0.025\text{mm}$
Edge Thickness	$\leq 0.03\text{mm}$
Surface Quality	40/20
Transmittance	1. AR $\geq 97\%$ 2. DLC+AR $\geq 90\%$
Surface	$N < 2 \Delta N < 1$
Flatness	$< 10\mu\text{m}$
Decentration	1. Window $< 30'$ 2. Lens $< 1.5'$



Ge Spheric Surface



ZnS Spheric Surface

Spheric	
Material	Ge, Si, ZnSe, ZnS, Chalcogenide Glasses
Specification	Customized
Diameter Range	12mm~450mm
Polishing diameter	12mm~450mm
Diameter Tolerance	0.05mm
Center thickness tolerance	0.02mm
Surface Quality	20/10, 10/5
Surface Accuracy	PV $\lambda/10, \lambda/20$
Surface Roughness	$Ra \leq 0.04\mu\text{m}$
Local Error	≤ 0.5
Decentration	$\leq 1'$
Total High Tolerance	± 0.02
Concave Sag	± 0.02

► Infrared Optics



Chalcogenide Glasses



ZnSe



Ge



Si

Aspheric	
Material	Ge,Si,ZnSe ,ZnS,Chalcogenide Glasses
Specification	Customized
Diameter Range	12mm~450mm
Aspheric Turning Diameter	12mm~200mm
Diameter Tolerance	0.05mm
Center Thickness Tolerance	0.02mm
Surface Quality	20/10、10/5
Surface Accuracy	PV $\lambda/10$ 、 $\lambda/20$
Surface Roughness	Ra \leq 0.04 μ m
Local Error	\leq 0.5
Decentration	\leq 1'
Total High Tolerance	\pm 0.02mm
Concave Sag	\pm 0.02mm



Chalcogenide



Chalcogenide Diffraction



Molded Chalcogenide

Molded Optics				
Specification	Outer Diameter			
	ϕ 1.0~7mm	ϕ 8.0~20mm	ϕ 20~40mm	ϕ 40~60mm
Surface	0.2 μ m	0.3 μ m	0.5 μ m	<1 μ m
RMS	<20 μ m	<50 μ m	<100 μ m	<100 μ m
Eccentricity	\leq 3 μ m	\leq 5 μ m	\leq 5 μ m	\leq 8 μ m
Center Thickness Tolerance	\pm 0.005mm	\pm 0.01mm	\pm 0.015mm	\pm 0.02mm
OD Tolerance	\pm 0.01mm	\pm 0.015mm	\pm 0.02mm	\pm 0.03mm
Appearance Rating	40/20	40/20	60/40	\leq 100/60
Flatness	<15'	<30'	<45'	<60'
Material	IR Chalcogenide Glass			
Application	IR Imaging, IR communications, security and monitoring, IR temperature measurement and etc.			

Optical Dome ◀



K9



Quartz



Sapphire

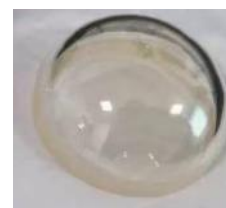
Visible Light Dome	
Material	K9, Quartz, Sapphire
Specification	As per request
Diameter Range	20mm-200mm
OD Tolerance	$\pm 0.02\text{mm} - \pm 0.1\text{mm}$
Center Thickness Tolerance	$\pm 0.03\text{mm} - \pm 0.1\text{mm}$
Total High Tolerance	$\pm 0.02\text{mm} - \pm 0.05\text{mm}$
Concave Sag	$\pm 0.02\text{mm} - \pm 0.05\text{mm}$
Surface Quality	60/40, 40/20, 20/10
Surface Roughness	$R_a \leq 0.04\mu\text{m}$
Surface Accuracy	$PV\lambda: \lambda/2, \lambda/4$
ETV	$\leq 5'$
Transmittance	$AR \geq 97\%; DLC+AR \geq 90\%$



Si



Ge

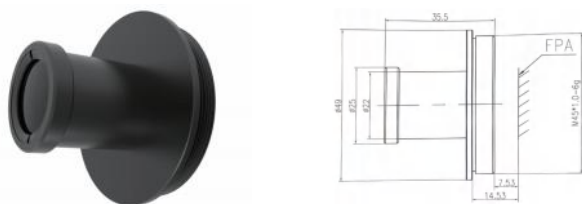


Zns

IR Dome	
Material	Ge, Si, ZnS, ZnSe
Specification	Customized
Diameter Range	20mm-200mm
OD Tolerance	$\pm 0.02\text{mm} - \pm 0.1\text{mm}$
Center Thickness Tolerance	$\pm 0.03\text{mm} - \pm 0.1\text{mm}$
Total High Tolerance	$\pm 0.02\text{mm} - \pm 0.05\text{mm}$
Concave Sag	$\pm 0.02\text{mm} - \pm 0.05\text{mm}$
Surface Quality	80/50, 60/40, 40/20
Surface Roughness	$R_a \leq 0.04\mu\text{m}$
Surface Accuracy	$PV \lambda: \lambda/2, \lambda/4$
ETV	$\leq 5'$
Transmittance	$AR \geq 97\%; DLC+AR \geq 90\%$

Uncooled LWIR Lens

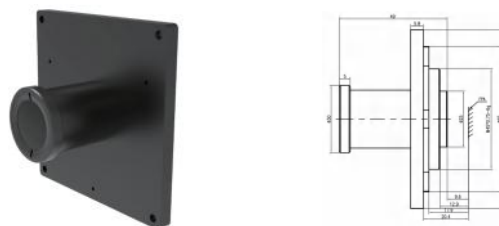
Item No:CGLE-W-4.8F1.0



4.8mmF1.0 Athermalized Lens

Focus Length (f)	4.8mm
Aperture (F)	1.0
Spectrum	8~12μm
FOV	133°X107°
Coating	AR
Transmittance	>86%
Detector	640X512 (17μm)
Focus Mode	Athermal
Focus Range	0.5m~∞
Rear Working Distance	7.53mm
Mount Type	M45×1.0
Size	φ49/L35.5mm
Weight	59.1g
Working Temp	-40°C~60°C
Storage Temp	-40°C~80°C
IP Grade	IP67

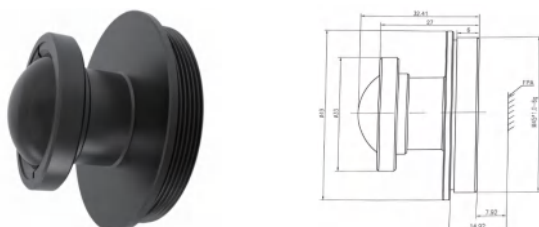
Item No:CGLE-W-5.65F1.0



5.65mmF1.0 Athermalized Lens

Focus Length (f)	5.65mm
Aperture (F)	1.0
Spectrum	8~12μm
FOV	155.7°X124.6°
Coating	AR
Transmittance	>85%
Detector	1280X1024(12μm)
Focus Mode	Athermal
Focus Range	0.6m~∞
Rear Working Distance	9.6mm
Mount Type	M45×0.75
Size	φ30/L49mm
Weight	139.1g
Working Temp	-40°C~60°C
Storage Temp	-40°C~80°C
IP Grade	IP67

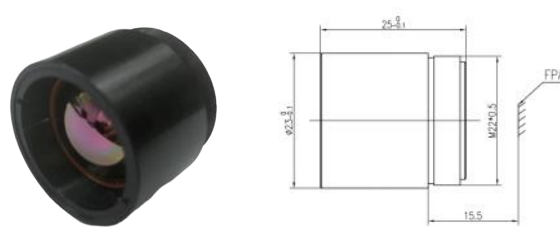
Item No:CGLE-W-8F1.0



8mmF1.0 Athermalized Lens

Focus Length (f)	8mm
Aperture (F)	1.0
Spectrum	8~12μm
FOV	77.9°X62.3°
Coating	AR
Transmittance	>89%
Detector	640X512(17μm)
Focus Mode	Athermal
Focus Range	1m~∞
Rear Working Distance	7.92mm
Mount Type	M45×1.0
Size	φ49/L32.41mm
Weight	63.8g
Working Temp	-40°C~60°C
Storage Temp	-40°C~80°C
IP Grade	IP67

Item No:CGLE-W-9F1.0

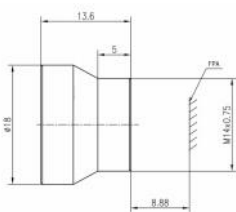


9mmF1.0 Athermalized Lens

Focus Length (f)	9mm
Aperture (F)	1.0
Spectrum	8~12μm
FOV	28.7°X21.7°
Coating	AR
Transmittance	>94%
Detector	384X288(12μm)
Focus Mode	Athermal
Focus Range	1m~∞
Rear Working Distance	15mm
Mount Type	M22×0.5
Size	φ23/L25mm
Weight	22g
Working Temp	-40°C~60°C
Storage Temp	-40°C~80°C
IP Grade	IP67

Uncooled LWIR Lens

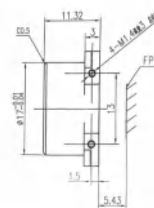
Item No:CGLE-W-9F1.1



9mmF1.1 Athermalized Lens

Focus Length (f)	9mm
Aperture (F)	1.1
Spectrum	8~12μm
FOV	39.2°X31.8°
Coating	AR
Transmittance	>89%
Detector	640X512(12μm)
Focus Mode	Athermal
Focus Range	1m~∞
Rear Working Distance	8.88mm
Mount Type	M14×0.75
Size	φ49/L35.5mm
Weight	7.8g
Working Temp	-40°C~60°C
Storage Temp	-40°C~80°C
IP Grade	IP67

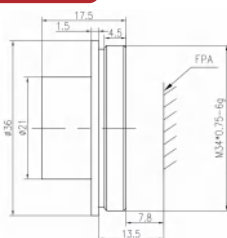
Item No:CGLE-W-9.1F1.0



9.1mmF1.0 Athermalized Lens

Focus Length (f)	9.1mm
Aperture (F)	1.0
Spectrum	8~12μm
FOV	39.2°X31.8°
Coating	AR
Transmittance	>89%
Detector	640X512(12μm)
Focus Mode	Athermal
Focus Range	1m~∞
Rear Working Distance	5.43mm
Mount Type	Flanged
Size	φ17/L11.32mm
Weight	9.2g
Working Temp	-40°C~60°C
Storage Temp	-40°C~80°C
IP Grade	IP67

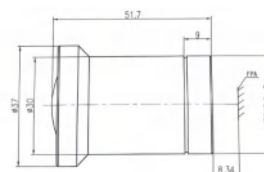
Item No:CGLE-W-10F1.0



10mmF1.0 Athermalized Lens

Focus Length (f)	10mm
Aperture (F)	1.0
Spectrum	8~12μm
FOV	37.4°X28°
Coating	AR
Transmittance	>94%
Detector	384X288(17μm)
Focus Mode	Athermal
Focus Range	1m~∞
Rear Working Distance	7.8mm
Mount Type	M34×0.75
Size	φ21/L17.5mm
Weight	27.05g
Working Temp	-40°C~60°C
Storage Temp	-40°C~80°C
IP Grade	IP67

Item No:CGLE-W-11.6F1.0

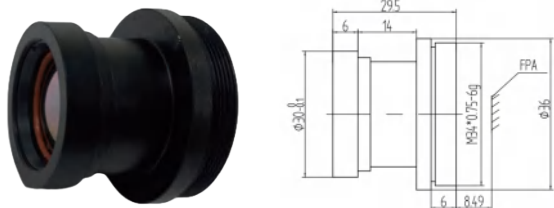


11.6mmF1.0 Athermalized Lens

Focus Length (f)	11.6mm
Aperture (F)	1.0
Spectrum	8~12μm
FOV	75.9°X60.7°
Coating	AR
Transmittance	>85%
Detector	1280X1024(12μm)
Focus Mode	Athermal
Focus Range	1.2m~∞
Rear Working Distance	8.34mm
Mount Type	M30×0.5
Size	φ37/L51.7mm
Weight	93g
Working Temp	-40°C~60°C
Storage Temp	-45°C~80°C
IP Grade	IP67

Uncooled LWIR Lens

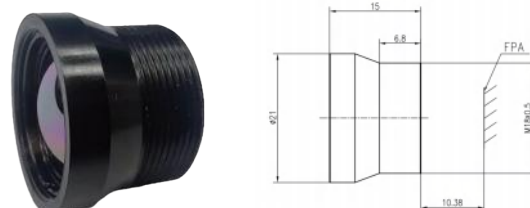
Item No:CGLE-W-13F1.0



13mmF1.0 Athermalized Lens

Focus Length (f)	13mm
Aperture (F)	1.0
Spectrum	8~12μm
FOV	45.4°X37°
Coating	AR
Transmittance	>88%
Detector	640X512(12μm)
Focus Mode	Athermal
Focus Range	1.5m~∞
Rear Working Distance	8.49mm
Mount Type	M34×0.75
Size	φ30/L29.5mm
Weight	44g
Working Temp	-40°C~60°C
Storage Temp	-40°C~80°C
IP Grade	IP67

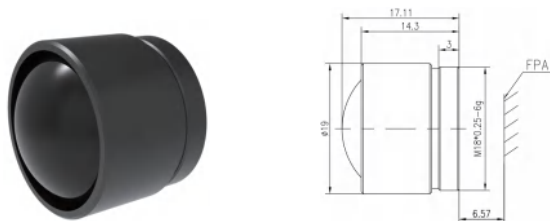
Item No:CGLE-W-13F1.1



13mmF1.1 Athermalized Lens

Focus Length (f)	13mm
Aperture (F)	1.1
Spectrum	8~12μm
FOV	32.9°X26.6°
Coating	AR
Transmittance	>89%
Detector	640X512(12μm)
Focus Mode	Athermal
Focus Range	1.5m~∞
Rear Working Distance	10.38mm
Mount Type	M18×0.5
Size	φ21/L15mm
Weight	12g
Working Temp	-40°C~60°C
Storage Temp	-40°C~80°C
IP Grade	IP67

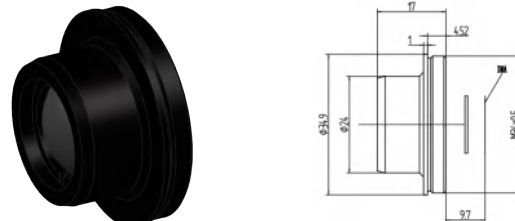
Item No:CGLE-W-14.1F1.0



14.1mmF1.0 Athermalized Lens

Focus Length (f)	14.1mm
Aperture (F)	1.0
Spectrum	8~12μm
FOV	25.6°X20.6°
Coating	AR
Transmittance	>89%
Detector	640X512(10μm)
Focus Mode	Athermal
Focus Range	1.5m~∞
Rear Working Distance	6.57mm
Mount Type	M18×2.5
Size	φ19/L14.3mm
Weight	11.8g
Working Temp	-40°C~90°C
Storage Temp	-40°C~90°C
IP Grade	IP67

Item No:CGLE-W-14.25F1.2

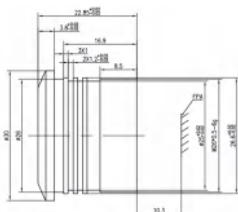


14.25mmF1.2 Athermalized Lens

Focus Length (f)	14.25mm
Aperture (F)	1.2
Spectrum	8~12μm
FOV	41.8°X34°
Coating	DLC
Transmittance	>85%
Detector	640X512(17μm)
Focus Mode	Athermal
Focus Range	1.5m~∞
Rear Working Distance	9.7mm
Mount Type	M34×0.5
Size	φ34/L17mm
Weight	28.6g
Working Temp	-40°C~60°C
Storage Temp	-40°C~80°C
IP Grade	IP67

Uncooled LWIR Lens

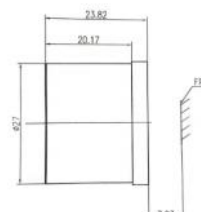
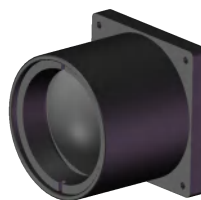
Item No:CGLE-W-16.1F1.1



16.1mmF1.1 Athermalized Lens

Focus Length (f)	16.1mm
Aperture (F)	1.1
Spectrum	8~12μm
FOV	26.85°X21.6°
Coating	AR
Transmittance	>89%
Detector	640X512(12μm)
Focus Mode	Athermal
Focus Range	1.6m~∞
Rear Working Distance	10.3mm
Mount Type	M26×0.5
Size	φ30/L22.85mm
Weight	31g
Working Temp	-40°C~60°C
Storage Temp	-40°C~80°C
IP Grade	IP67

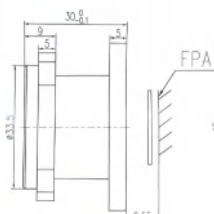
Item No:CGLE-W-19F1.0



19mmF1.0 Athermalized Lens

Focus Length (f)	19mm
Aperture (F)	1.0
Spectrum	8~12μm
FOV	22.6°X18.2°
Coating	AR
Transmittance	>89%
Detector	640X512(12μm)
Focus Mode	Athermal
Focus Range	2m~∞
Rear Working Distance	7.83mm
Mount Type	Flanged
Size	φ27/L23.82mm
Weight	35g
Working Temp	-40°C~60°C
Storage Temp	-40°C~80°C
IP Grade	IP67

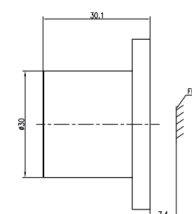
Item No:CGLE-W-19F1.1



19mmF1.1 Athermalized Lens

Focus Length (f)	19mm
Aperture (F)	1.1
Spectrum	8~12μm
FOV	44°X35.9°
Coating	AR
Transmittance	>86%
Detector	1280X1024(12μm)
Focus Mode	Athermal
Focus Range	5m~∞
Rear Working Distance	9.55mm
Mount Type	Flanged
Size	φ33.5/L30mm
Weight	112.8g
Working Temp	-40°C~60°C
Storage Temp	-40°C~90°C
IP Grade	IP67

Item No:CGLE-W-24F1.0

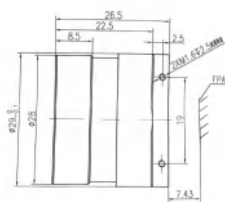


24mmF1.0 Athermalized Lens

Focus Length (f)	24mm
Aperture (F)	1.0
Spectrum	8~12μm
FOV	22.6°X18.2°
Coating	DLC
Transmittance	>89%
Detector	640X512(12μm)
Focus Mode	Athermal
Focus Range	2m~∞
Rear Working Distance	7.4mm
Mount Type	Flanged
Size	φ30/L30.1mm
Weight	74g
Working Temp	-40°C~60°C
Storage Temp	-40°C~80°C
IP Grade	IP67

Uncooled LWIR Lens

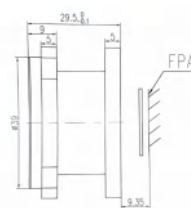
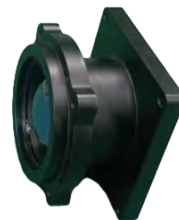
Item No:CGLE-W-25F1.0



25mmF1.0 Athermalized Lens

Focus Length (f)	25mm
Aperture (F)	1.0
Spectrum	8~12μm
FOV	17.5°X14°
Coating	AR
Transmittance	>89%
Detector	640X512(12μm)
Focus Mode	Athermal
Focus Range	2.5m~∞
Rear Working Distance	7.43mm
Mount Type	Flanged
Size	φ28/L26.5mm
Weight	33.74g
Working Temp	-40°C~60°C
Storage Temp	-40°C~80°C
IP Grade	IP67

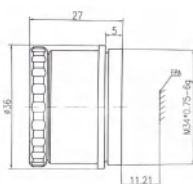
Item No:CGLE-W-25F1.1



25mmF1.1 Athermalized Lens

Focus Length (f)	25mm
Aperture (F)	1.1
Spectrum	8~12μm
FOV	34.2°X27.6°
Coating	AR
Transmittance	>88%
Detector	1280X1024(12μm)
Focus Mode	Athermal
Focus Range	3m~∞
Rear Working Distance	9.35mm
Mount Type	Flanged
Size	φ39/L29.5mm
Weight	84.5g
Working Temp	-40°C~60°C
Storage Temp	-40°C~80°C
IP Grade	IP67

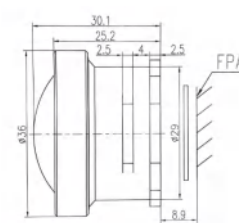
Item No:CGLE-W-25F1.2



25mmF1.2 Athermalized Lens

Focus Length (f)	25mm
Aperture (F)	1.2
Spectrum	8~12μm
FOV	24.6°X19.8°
Coating	AR
Transmittance	>89%
Detector	640X512(17μm)
Focus Mode	Athermal
Focus Range	2.5m~∞
Rear Working Distance	11.21mm
Mount Type	M34×0.75
Size	φ36/L27mm
Weight	61g
Working Temp	-40°C~60°C
Storage Temp	-40°C~90°C
IP Grade	IP67

Item No:CGLE-W-28F1.2

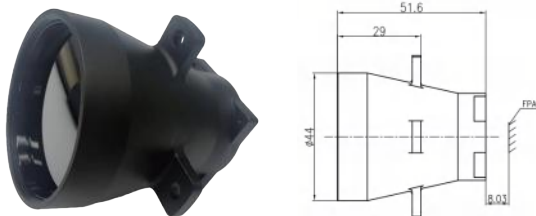


28mmF1.2 Athermalized Lens

Focus Length (f)	28mm
Aperture (F)	1.2
Spectrum	8~12μm
FOV	30.7°X24.8°
Coating	DLC
Transmittance	>90%
Detector	1280X1024(12μm)
Focus Mode	Athermal
Focus Range	3m~∞
Rear Working Distance	8.9mm
Mount Type	Flanged
Size	φ36/L30.1mm
Weight	55.83g
Working Temp	-40°C~60°C
Storage Temp	-40°C~80°C
IP Grade	IP67

Uncooled LWIR Lens

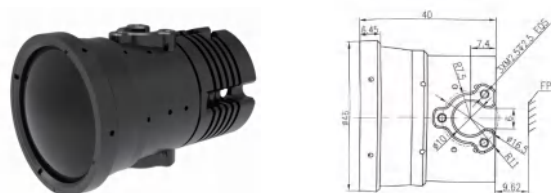
Item No:CGLE-W-35F1.0



35mmF1.0 Athermalized Lens

Focus Length (f)	35mm
Aperture (F)	1.0
Spectrum	8~12μm
FOV	12.5°X10°
Coating	DLC
Transmittance	>85%
Detector	640X512(12μm)
Focus Mode	Athermal
Focus Range	3.5m~∞
Rear Working Distance	8.03mm
Mount Type	Flanged
Size	φ44/L51.6mm
Weight	108g
Working Temp	-40°C~60°C
Storage Temp	-40°C~80°C
IP Grade	IP67

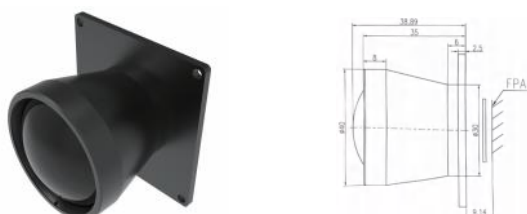
Item No:CGLE-W-40F1.0



40mmF1.0 Athermalized Lens

Focus Length (f)	40mm
Aperture (F)	1.0
Spectrum	8~12μm
FOV	11°X8.8°
Coating	AR
Transmittance	>88%
Detector	640X512(12μm)
Focus Mode	Athermal
Focus Range	4m~∞
Rear Working Distance	9.62mm
Mount Type	Flanged
Size	φ46/L40mm
Weight	89.74g
Working Temp	-40°C~60°C
Storage Temp	-40°C~80°C
IP Grade	IP67

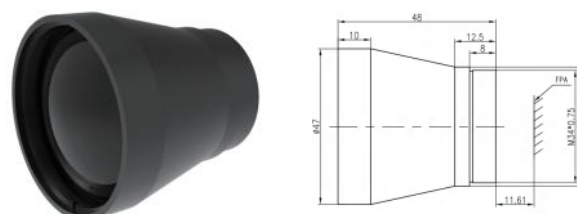
Item No:CGLE-W-40F1.2



40mmF1.2 Athermalized Lens

Focus Length (f)	40mm
Aperture (F)	1.2
Spectrum	8~12μm
FOV	21.7°X17.5°
Coating	AR
Transmittance	>90%
Detector	1280X1024(12μm)
Focus Mode	Athermal
Focus Range	4m~∞
Rear Working Distance	9.14mm
Mount Type	Flanged
Size	φ40/L35mm
Weight	86.9g
Working Temp	-40°C~60°C
Storage Temp	-40°C~80°C
IP Grade	IP67

Item No:CGLE-W-45F1.1

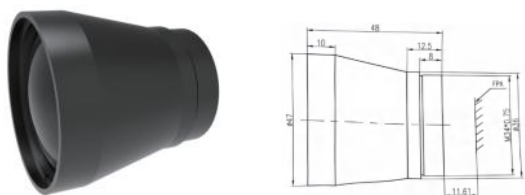


45mmF1.1 Athermalized Lens

Focus Length (f)	45mm
Aperture (F)	1.1
Spectrum	8~12μm
FOV	9.8°X7.8°
Coating	DLC
Transmittance	>89%
Detector	640X512(12μm)
Focus Mode	Athermal
Focus Range	4.5~∞
Rear Working Distance	11.61mm
Mount Type	M34×0.75
Size	φ47/L48mm
Weight	105g
Working Temp	-40°C~60°C
Storage Temp	-40°C~80°C
IP Grade	IP67

Uncooled LWIR Lens

Item No:CGLE-W-45F1.1



45mmF1.1 Athermalized Lens

Focus Length (f)	45mm
Aperture (F)	1.1
Spectrum	8~12μm
FOV	19.4°X15.6°
Coating	AR
Transmittance	>88%
Detector	1280X1024(12μm)
Focus Mode	Athermal
Focus Range	5m~∞
Rear Working Distance	9.45mm
Mount Type	Flanged
Size	φ51/L45mm
Weight	138.1g
Working Temp	-40°C~60°C
Storage Temp	-40°C~80°C
IP Grade	IP67

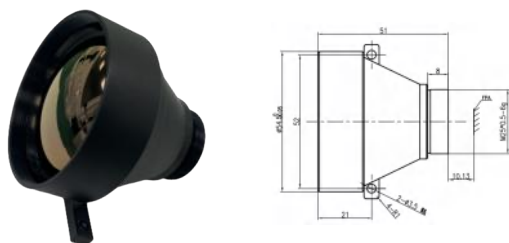
Item No:CGLE-W-50F1.0



50mmF1.0 Athermalized Lens

Focus Length (f)	50mm
Aperture (F)	1.0
Spectrum	8~12μm
FOV	8.8°X7°
Coating	DLC
Transmittance	>85%
Detector	640X512(12μm)
Focus Mode	Athermal
Focus Range	5m~∞
Rear Working Distance	7.83mm
Mount Type	Flanged
Size	φ57/L58.61mm
Weight	160g
Working Temp	-40°C~60°C
Storage Temp	-40°C~80°C
IP Grade	IP67

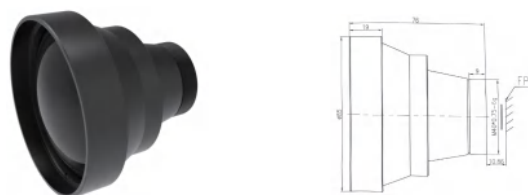
Item No:CGLE-W-60F1.2



60mmF1.2 Athermalized Lens

Focus Length (f)	60mm
Aperture (F)	1.2
Spectrum	8~12μm
FOV	7.3°X5.9°
Coating	HD
Transmittance	>88%
Detector	640X512(12μm)
Focus Mode	Athermal
Focus Range	6m~∞
Rear Working Distance	10.13mm
Mount Type	M25×0.5
Size	φ54.5/L51mm
Weight	121g
Working Temp	-40°C~60°C
Storage Temp	-40°C~90°C
IP Grade	IP67

Item No:CGLE-W-63F0.83

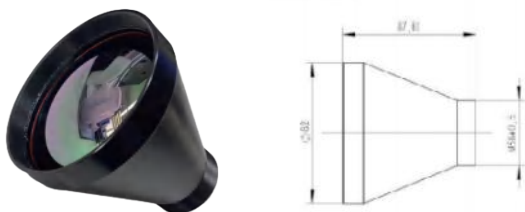


63mmF0.83 Athermalized Lens

Focus Length (f)	63mm
Aperture (F)	0.83
Spectrum	8~12μm
FOV	7.0°X5.6°
Coating	AR
Transmittance	>88%
Detector	640X512(12μm)
Focus Mode	Athermal
Focus Range	6.5m~∞
Rear Working Distance	10.86mm
Mount Type	M40×0.75
Size	φ85/L76mm
Weight	380.31g
Working Temp	-40°C~60°C
Storage Temp	-40°C~80°C
IP Grade	IP67

Uncooled LWIR Lens

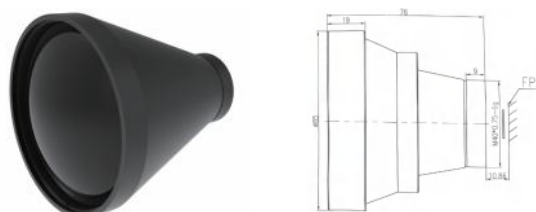
Item No:CGLE-W-75F1.0



75mmF1.0 Athermalized Lens

Focus Length (f)	75mm
Aperture (F)	1.0
Spectrum	8~12μm
FOV	8.3°X6.6°
Coating	AR
Transmittance	>89%
Detector	640X512(17μm)
Focus Mode	Athermal
Focus Range	7.5m~∞
Rear Working Distance	13.35mm
Mount Type	M38×0.5
Size	φ82/L87.6mm
Weight	371.8g
Working Temp	-40°C~60°C
Storage Temp	-40°C~80°C
IP Grade	IP67

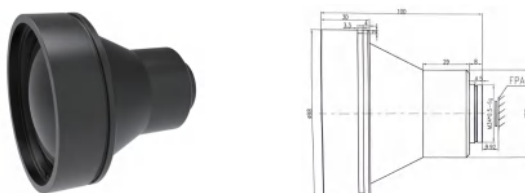
Item No:CGLE-W-90F1.0



90mmF1.0 Athermalized Lens

Focus Length (f)	90mm
Aperture (F)	1.0
Spectrum	8~12μm
FOV	4.9°X3.9°
Coating	DLC
Transmittance	>89%
Detector	640X512(12μm)
Focus Mode	Athermal
Focus Range	9m~∞
Rear Working Distance	14.13mm
Mount Type	M42×0.75
Size	φ97/L110.5mm
Weight	561g
Working Temp	-40°C~60°C
Storage Temp	-40°C~80°C
IP Grade	IP67

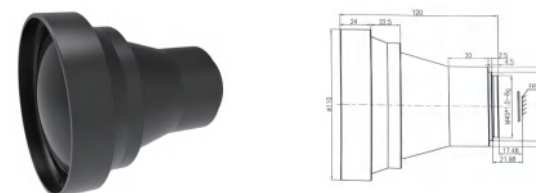
Item No:CGLE-W-100F1.2



100mmF1.2 Athermalized Lens

Focus Length (f)	100mm
Aperture (F)	1.2
Spectrum	8~12μm
FOV	6.2°X5.0°
Coating	AR
Transmittance	>88%
Detector	640X512(17μm)
Focus Mode	Athermal
Focus Range	25m~∞
Rear Working Distance	9.92mm
Mount Type	M34×0.5
Size	φ98/L100mm
Weight	302.98g
Working Temp	-40°C~60°C
Storage Temp	-40°C~90°C
IP Grade	IP67

Item No:CGLE-W-121F1.2



121mmF1.2 Athermalized Lens

Focus Length (f)	121mm
Aperture (F)	1.2
Spectrum	8~12μm
FOV	7.3°X5.8°
Coating	AR
Transmittance	>88%
Detector	1280X1024(12μm)
Focus Mode	Athermal
Focus Range	5m~∞
Rear Working Distance	17.48mm
Mount Type	M45×1.0
Size	φ110/L120mm
Weight	785g
Working Temp	-40°C~60°C
Storage Temp	-40°C~80°C
IP Grade	IP67

Uncooled LWIR Lens

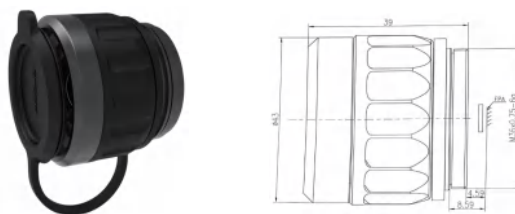
Item No:CGLE-S-19F1.0



19mmF1.0 Manual Focus Lens

Focus Length (f)	19mm
Aperture (F)	1.0
Spectrum	8~12μm
FOV	13.8°X10.4°
Coating	DLC/AR
Transmittance	>88%
Detector	384X288(12μm)
Focus Mode	Manual
Focus Range	1m~∞
Rear Working Distance	5.1mm
Mount Type	Flanged
Size	φ34/L28mm
Weight	70.23g
Working Temp	-40°C~60°C
Storage Temp	-40°C~80°C
IP Grade	IP67

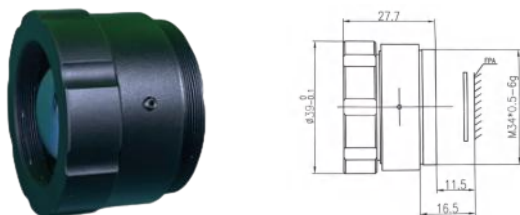
Item No:CGLE-S-25F1.0



25mmF1.0 Manual Focus Lens

Focus Length (f)	25mm
Aperture (F)	1.0
Spectrum	8~12μm
FOV	10.5°X7.9°
Coating	DLC/AR
Transmittance	>88%
Detector	384X288(12μm)
Focus Mode	Manual
Focus Range	1m~∞
Rear Working Distance	4.59mm
Mount Type	M36×0.75
Size	φ43/L39mm
Weight	82.5g
Working Temp	-40°C~60°C
Storage Temp	-40°C~80°C
IP Grade	IP67

Item No:CGLE-S-25F1.2



25mmF1.2 Manual Focus Lens

Focus Length (f)	25mm
Aperture (F)	1.2
Spectrum	8~12μm
FOV	34.2°X27.6°
Coating	AR
Transmittance	>89%
Detector	1280X1024(12μm)
Focus Mode	Manual
Focus Range	3m~∞
Rear Working Distance	11.5mm
Mount Type	M34×0.5
Size	φ39/L27.7mm
Weight	67.5g
Working Temp	-40°C~60°C
Storage Temp	-40°C~90°C
IP Grade	IP67

Item No:CGLE-S-35F1.0

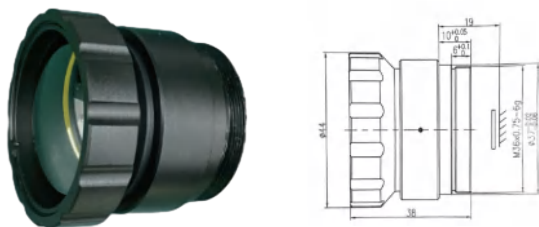


35mmF1.0 Manual Focus Lens

Focus Length (f)	35mm
Aperture (F)	1.0
Spectrum	8~12μm
FOV	7.5°X5.7°
Coating	DLC/AR
Transmittance	>88%
Detector	384X288(12μm)
Focus Mode	Manual
Focus Range	3.5m~∞
Rear Working Distance	5.1mm
Mount Type	Flanged
Size	φ42/L43.3mm
Weight	112g
Working Temp	-40°C~60°C
Storage Temp	-40°C~80°C
IP Grade	IP67

Uncooled LWIR Lens

Item No:CGLE-S-35F1.0



35mmF1.0 Manual Focus Lens

Focus Length (f)	35mm
Aperture (F)	1.0
Spectrum	8~12μm
FOV	12.5°X10°
Coating	DLC/AR
Transmittance	>88%
Detector	640X512(12μm)
Focus Mode	Manual
Focus Range	3.5m~∞
Rear Working Distance	19mm
Mount Type	M36×0.75
Size	φ44/L38mm
Weight	75.7g
Working Temp	-40°C~60°C
Storage Temp	-40°C~80°C
IP Grade	IP67

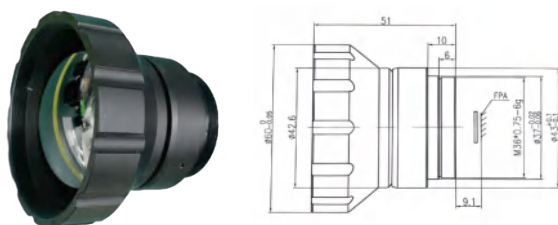
Item No:CGLE-S-50F1.0



50mmF1.0 Manual Focus Lens

Focus Length (f)	50mm
Aperture (F)	1.0
Spectrum	8~12μm
FOV	5.3°X4.0°
Coating	DLC/AR
Transmittance	>88%
Detector	384X288(12μm)
Focus Mode	Manual
Focus Range	3m~∞
Rear Working Distance	5.1mm
Mount Type	Flanged
Size	φ57/L64.55mm
Weight	179.71g
Working Temp	-40°C~60°C
Storage Temp	-40°C~80°C
IP Grade	IP67

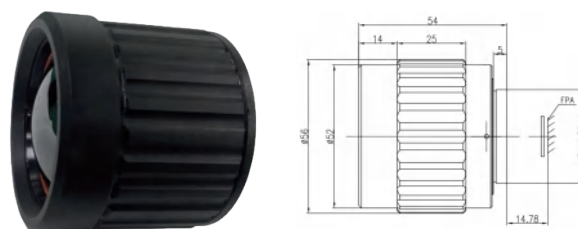
Item No:CGLE-S-50F1.0



50mmF1.0 Manual Focus Lens

Focus Length (f)	50mm
Aperture (F)	1.0
Spectrum	8~12μm
FOV	8.8°X7.0°
Coating	DLC
Transmittance	>89%
Detector	640X512(12μm)
Focus Mode	Manual
Focus Range	5m~∞
Rear Working Distance	9.1mm
Mount Type	M36×0.75
Size	φ60/L51mm
Weight	117g
Working Temp	-40°C~60°C
Storage Temp	-40°C~90°C
IP Grade	IP67

Item No:CGLE-S-50F1.2

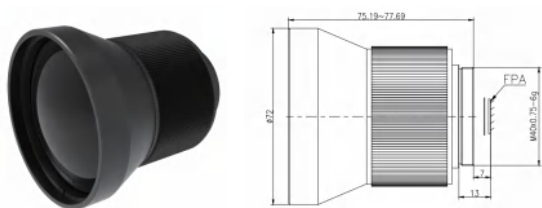


50mmF1.2 Manual Focus Lens

Focus Length (f)	50mm
Aperture (F)	1.2
Spectrum	8~12μm
FOV	12.4°X9.3°
Coating	DLC
Transmittance	>89%
Detector	640X512(17μm)
Focus Mode	Manual
Focus Range	3m~∞
Rear Working Distance	14.78mm
Mount Type	M34×0.75
Size	φ56/L54mm
Weight	195g
Working Temp	-40°C~60°C
Storage Temp	-40°C~80°C
IP Grade	IP67

Uncooled LWIR Lens

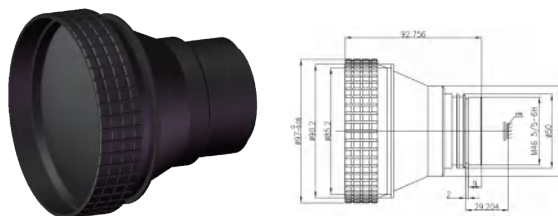
Item No:CGLE-S-75F1.2



75mmF1.2 Manual Focus Lens

Focus Length (f)	75mm
Aperture (F)	1.2
Spectrum	8~12μm
FOV	8.3°X6.6°
Coating	DLC
Transmittance	>89%
Detector	640X512(12&17μm)
Focus Mode	Manual
Focus Range	5m~∞
Rear Working Distance	13mm
Mount Type	M40×0.75
Size	φ72/L77.69mm
Weight	260.1g
Working Temp	-40°C~60°C
Storage Temp	-40°C~80°C
IP Grade	IP67

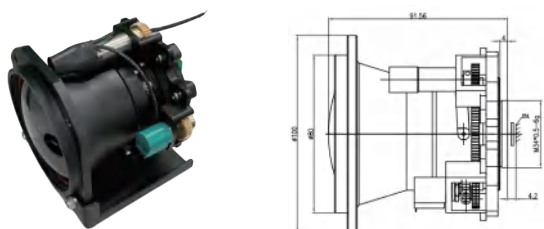
Item No:CGLE-S-90F1.0



90mmF1.0 Manual Focus Lens

Focus Length (f)	90mm
Aperture (F)	1.0
Spectrum	8~12μm
FOV	4.9°X3.9°
Coating	DLC
Transmittance	>89%
Detector	640X512(12μm)
Focus Mode	Manual
Focus Range	10m~∞
Rear Working Distance	29.204mm
Mount Type	Flanged
Size	φ97/L92.756mm
Weight	372.5g
Working Temp	-40°C~60°C
Storage Temp	-40°C~80°C
IP Grade	IP67

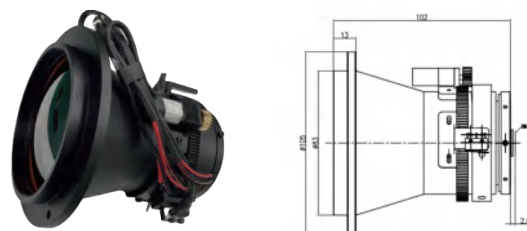
Item No:CGLE-D-70F1.0



70mmF1.0 Motorized Focus Lens

Focus Length (f)	70mm
Aperture (F)	1.0
Spectrum	8~12μm
FOV	8.9°X7.1°
Coating	DLC
Transmittance	>89%
Detector	640X512(17μm)
Focus Mode	Motorized
Focus Range	7m~∞
Rear Working Distance	4.2mm
Mount Type	M34×0.5
Size	φ100/L91.56mm
Weight	490g
Working Temp	-40°C~60°C
Storage Temp	-40°C~90°C
IP Grade	IP67

Item No:CGLE-D-75F1.0

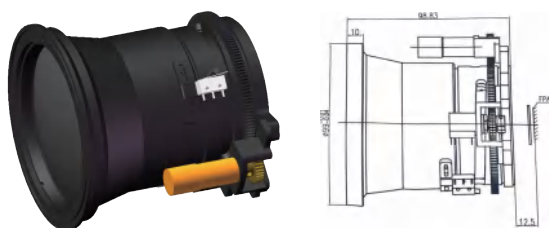


75mmF1.0 Motorized Focus Lens

Focus Length (f)	75mm
Aperture (F)	1.0
Spectrum	8~12μm
FOV	8.3°X6.6°
Coating	DLC
Transmittance	>89%
Detector	640X512(17μm)
Focus Mode	Motorized
Focus Range	7.5m~∞
Rear Working Distance	2.69mm
Mount Type	Flanged
Size	φ105/L102mm
Weight	507g
Working Temp	-40°C~60°C
Storage Temp	-40°C~80°C
IP Grade	IP67

Uncooled LWIR Lens

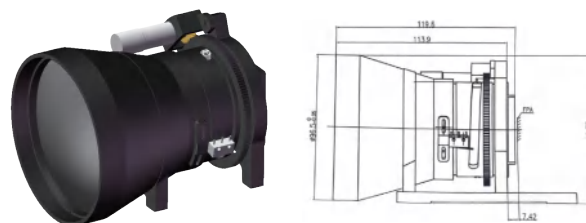
Item No:CGLE-D-75F1.0



75mmF1.0 Motorized Focus Lens

Focus Length (f)	75mm
Aperture (F)	1.0
Spectrum	8~12μm
FOV	11.7°X9.4°
Coating	DLC
Transmittance	>89%
Detector	1280X1024(12μm)
Focus Mode	Motorized
Focus Range	10m~∞
Rear Working Distance	12.5mm
Mount Type	Flanged
Size	φ99/L98.83mm
Weight	635g
Working Temp	-40°C~60°C
Storage Temp	-40°C~90°C
IP Grade	IP67

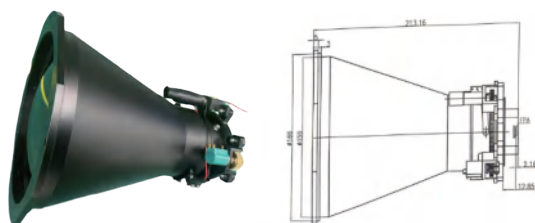
Item No:CGLE-D-85F1.0



85mmF1.0 Motorized Focus Lens

Focus Length (f)	85mm
Aperture (F)	1.0
Spectrum	8~12μm
FOV	8°X 6°
Coating	DLC
Transmittance	>89%
Detector	1024X768(12μm)
Focus Mode	Motorized
Focus Range	15m~∞
Rear Working Distance	7.42mm
Mount Type	Flanged
Size	φ97/L119.6mm
Weight	780g
Working Temp	-40°C~60°C
Storage Temp	-40°C~80°C
IP Grade	IP67

Item No:CGLE-D-150F1.0

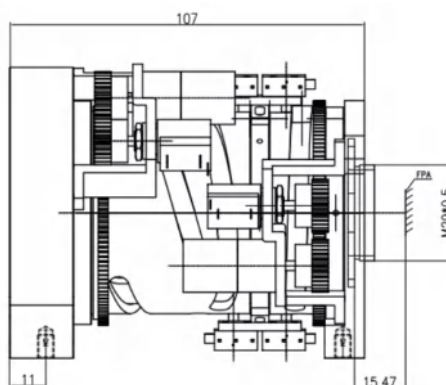


150mmF1.0 Motorized Focus Lens

Focus Length (f)	150mm
Aperture (F)	1.0
Spectrum	8~12μm
FOV	2.9°X2.3°
Coating	DLC
Transmittance	>88%
Detector	640X512(12μm)
Focus Mode	Motorized
Focus Range	30m~∞
Rear Working Distance	12.85mm
Mount Type	M34×0.5
Size	φ185/L213.2mm
Weight	1810g
Working Temp	-40°C~60°C
Storage Temp	-40°C~80°C
IP Grade	IP67

Uncooled LWIR Lens

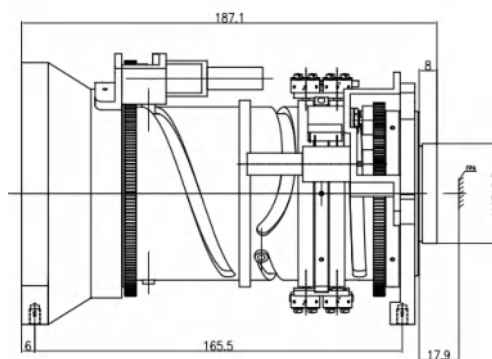
Item No: CGLE-D-25~75F1.2



25 ~ 75mmF1.2 Continuous Zoom Lens

Focus Length (f)	25~75mm	Rear Working Distance	15.47mm
Aperture (F)	1.2	Mount Type	M29×0.5
Spectrum	8~12μm	Size	φ107/L107mm
FOV	24.6°X19.8°~8.3°X6.6°	Weight	750g
Coating	DLC	Working Temp	-40°C~60°C
Transmittance	>84%	Storage Temp	-40°C~80°C
Detector	640X512(17μm)	Position Feedback	Encoder/Potentiometer
Focus Mode	Motorized	IP Grade	IP67
Focus Range	2.5m~∞	Drive Voltage	12VDC

Item No: CGLE-Z-25~100F1.2

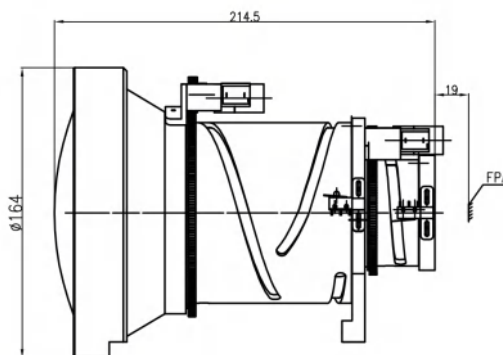
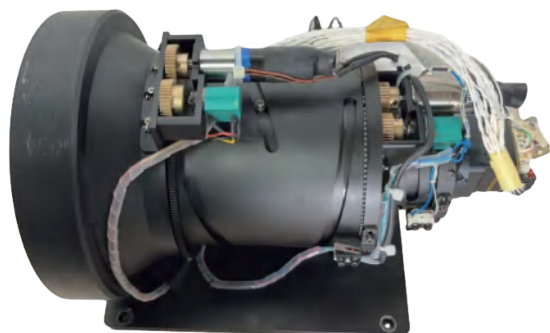


25 ~ 100mmF1.2 Continuous Zoom Lens

Focus Length (f)	25~100mm	Rear Working Distance	17.9mm
Aperture (F)	1.2	Mount Type	M45×0.5
Spectrum	8~12μm	Size	φ140/L187.1mm
FOV	24.6°X19.8°~6.2°X5.0°	Weight	1670g
Coating	DLC	Working Temp	-40°C~60°C
Transmittance	>84%	Storage Temp	-40°C~80°C
Detector	640X512(17μm)	Position Feedback	Encoder/Potentiometer
Focus Mode	Motorized	IP Grade	IP67
Focus Range	2.5m~∞	Drive Voltage	12VDC

Uncooled LWIR Lens

Item No: CGLE-Z-25~200F1.1/1.3

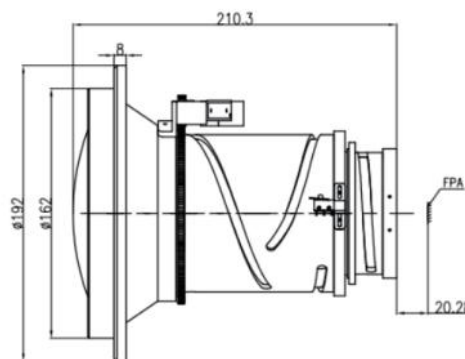


25 ~ 200mmF1.1/1.3 Continuous Zoom Lens

Focus Length (f)	25~200mm
Aperture (F)	1.1/1.3
Spectrum	8~12μm
FOV	17.5°X14°~2.2°X1.8°
Coating	DLC
Transmittance	>84%
Detector	640X512(12μm)
Focus Mode	Motorized
Focus Range	2.5m~∞

Rear Working Distance	19mm
Mount Type	Flanged
Size	φ164/L214.5mm
Weight	2510g
Working Temp	-40°C~60°C
Storage Temp	-40°C~80°C
Position Feedback	Encoder/Potentiometer
IP Grade	IP67
Drive Voltage	12VDC

Item No: CGLE-Z-18~180F1.0/1.2



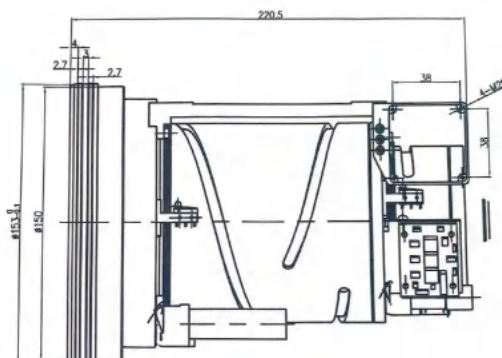
18 ~ 180mmF1.0/1.2 Continuous Zoom Lens

Focus Length (f)	18~180mm
Aperture (F)	1.0/1.2
Spectrum	8~12μm
FOV	33.6°X27.2°~3.5°X2.8°
Coating	DLC
Transmittance	>84%
Detector	640X512(17μm)
Focus Mode	Motorized
Focus Range	1.5m~∞

Rear Working Distance	10.73mm
Mount Type	M59×0.75
Size	φ192/L220mm
Weight	2625g
Working Temp	-40°C~60°C
Storage Temp	-40°C~80°C
Position Feedback	Encoder/Potentiometer
IP Grade	IP67
Drive Voltage	12VDC

Uncooled LWIR Lens

Item No:CGLE-Z-30~150F1.2

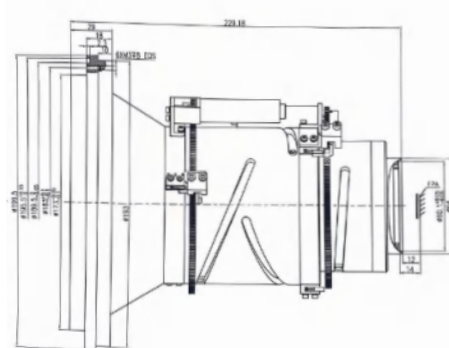


30 ~ 150mmF1.2 Continuous Zoom Lens

Focus Length (f)	30~150mm
Aperture (F)	1.2
Spectrum	8~12μm
FOV	28.7°X23.2°~5.9°X4.7°
Coating	DLC
Transmittance	>84%
Detector	1280X1024(12μm)
Focus Mode	Motorized
Focus Range	3m~∞

Rear Working Distance	14.84mm
Mount Type	Flanged
Size	φ153/L220.5mm
Weight	2910g
Working Temp	-40°C~60°C
Storage Temp	-40°C~80°C
Position Feedback	Encoder/Potentiometer
IP Grade	IP67
Drive Voltage	12VDC

Item No:CGLE-Z-30~180F0.85/1.2



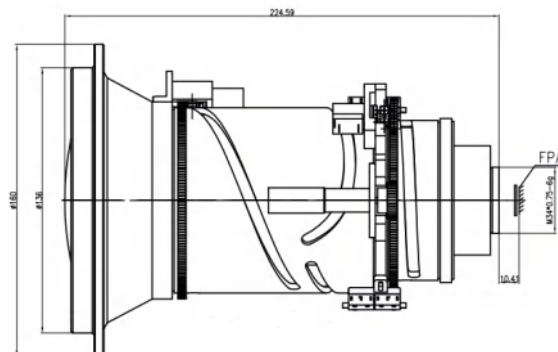
30 ~ 180mmF0.85/1.2 Continuous Zoom Lens

Focus Length (f)	30~180mm
Aperture (F)	0.85/1.2
Spectrum	8~12μm
FOV	20.6°X16.52°~3.5°X2.8°
Coating	DLC
Transmittance	>84%
Detector	640X512(17μm)
Focus Mode	Motorized
Focus Range	3m~∞

Rear Working Distance	12mm
Mount Type	Flanged
Size	φ199.2/L229.18mm
Weight	3073.9g
Working Temp	-40°C~60°C
Storage Temp	-40°C~80°C
Position Feedback	Encoder/Potentiometer
IP Grade	IP67
Drive Voltage	12VDC

Uncooled LWIR Lens

Item No:CGLE-Z-31~155F1.2

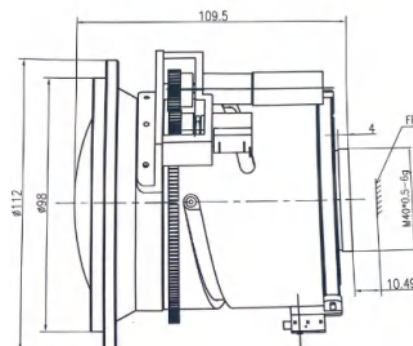


31 ~ 155mmF1.2 Continuous Zoom Lens

Focus Length (f)	31~155mm
Aperture (F)	1.2
Spectrum	8~12μm
FOV	20.6°X16.5°~4°X3.2°
Coating	DLC
Transmittance	>84%
Detector	640X512(17μm)
Focus Mode	Motorized
Focus Range	3m~∞

Rear Working Distance	10.41mm
Mount Type	M34×0.75
Size	φ160/L224.59mm
Weight	2250g
Working Temp	-40°C~60°C
Storage Temp	-40°C~80°C
Position Feedback	Encoder/Potentiometer
IP Grade	IP67
Drive Voltage	12VDC

Item No:CGLE-B-50/100F1.1



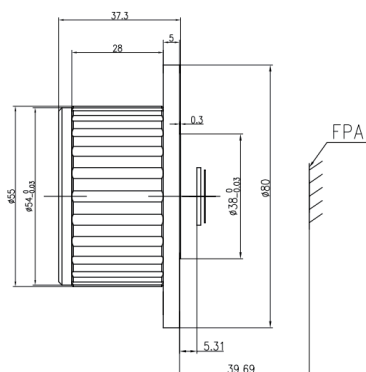
50/100mmF1.1 Dual-Field Lens

Focus Length (f)	50/100mm
Aperture (F)	1.1
Spectrum	8~12μm
FOV	8.9°X7.1°/4.5°X3.6°
Coating	DLC
Transmittance	>85%
Detector	640X512(12μm)
Focus Mode	Motorized
Focus Range	5m~∞

Rear Working Distance	10.49mm
Mount Type	M40×0.5
Size	φ128/L109.5mm
Weight	940g
Working Temp	-40°C~60°C
Storage Temp	-40°C~80°C
Position Feedback	Encoder/Potentiometer
IP Grade	IP67
Drive Voltage	12VDC

Cooled LWIR Lens

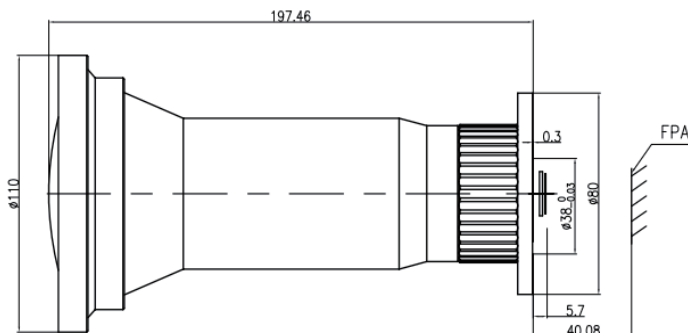
Item No: CGLE-ZL-50F2.0



50mmF2.0 Cooled LWIR Manual Lens

Focus Length (f)	50mm	Focus Range	3m~∞
Aperture (F)	2.0	Rear Working Distance	39.69mm
Spectrum	7.7~11μm	Mount Type	Flanged
FOV	18.2°X14.6°	Size	φ55/L37.3mm
Coating	AR	Weight	211g
Transmittance	>88%	Working Temp	-40°C~60°C
Detector	640X512(25μm)	Storage Temp	-40°C~80°C
Focus Mode	Manual	IP Grade	IP67

Item No: CGLE-ZL-200F2.0



200mmF2.0 Cooled LWIR Manual Lens

Focus Length (f)	200mm	Focus Range	50m~∞
Aperture (F)	2.0	Rear Working Distance	40.08mm
Spectrum	7.7~11μm	Mount Type	Flanged
FOV	4.6°X3.7°	Size	φ110/L197.46mm
Coating	AR	Weight	1645g
Transmittance	>88%	Working Temp	-40°C~60°C
Detector	640X512(25μm)	Storage Temp	-40°C~80°C
Focus Mode	Manual	IP Grade	IP67

Cooled MWIR Lens

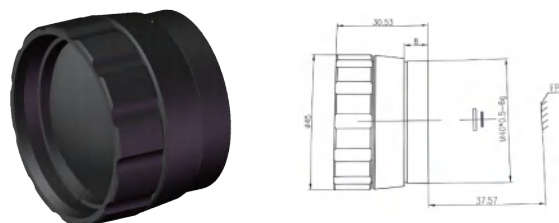
Item No:CGLE-ZL-50F4.0



50mmF4.0 Cooled MWIR Manual Lens

Focus Length (f)	50mm
Aperture (F)	4.0
Spectrum	3.7~4.8μm
FOV	11°X8.8°
Coating	DLC/AR
Transmittance	>88%
Detector	640X512(15μm)
Focus Mode	Manual
Focus Range	3m~∞
Rear Working Distance	37.6mm
Mount Type	Flanged
Size	φ43/L30.3mm
Weight	151g
Working Temp	-40°C~60°C
Storage Temp	-40°C~80°C
IP Grade	IP67

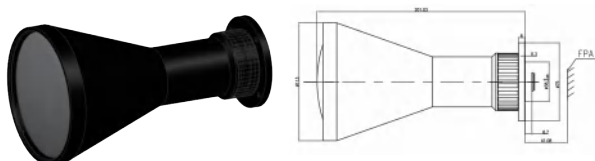
Item No:CGLE-ZL-50F4.0



50mmF4.0 Cooled MWIR Manual Lens

Focus Length (f)	50mm
Aperture (F)	4.0
Spectrum	3.7~4.8μm
FOV	14.6°X11.7°
Coating	DLC
Transmittance	>84%
Detector	1280X1024(10μm)
Focus Mode	Manual
Focus Range	3m~∞
Rear Working Distance	37.57mm
Mount Type	M40×0.5
Size	φ45/L30.53mm
Weight	85g
Working Temp	-40°C~60°C
Storage Temp	-40°C~80°C
IP Grade	IP67

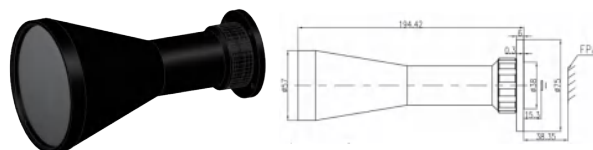
Item No:CGLE-ZL-200F2.0



200mmF2.0 Cooled MWIR Manual Lens

Focus Length (f)	200mm
Aperture (F)	2.0
Spectrum	3.7~4.8μm
FOV	4.6°X3.7°
Coating	AR
Transmittance	>88%
Detector	640X512(25μm)
Focus Mode	Manual
Focus Range	50m~∞
Rear Working Distance	41.08mm
Mount Type	Flanged
Size	φ113/L201.03mm
Weight	1280g
Working Temp	-40°C~60°C
Storage Temp	-40°C~80°C
IP Grade	IP67

Item No:CGLE-ZL-200F4.0

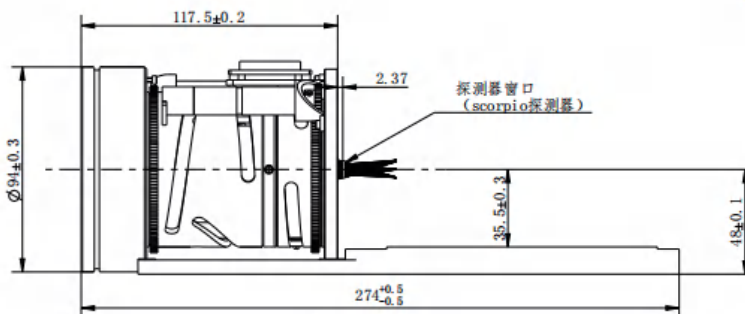


200mmF4.0 Cooled MWIR Manual Lens

Focus Length (f)	200mm
Aperture (F)	4.0
Spectrum	3.7~4.8μm
FOV	2.8°X2.2°
Coating	AR
Transmittance	>88%
Detector	640X512(15μm)
Focus Mode	Manual
Focus Range	50m~∞
Rear Working Distance	38.35mm
Mount Type	Flanged
Size	φ57/L194.42mm
Weight	506.8g
Working Temp	-40°C~60°C
Storage Temp	-45°C~80°C
IP Grade	IP67

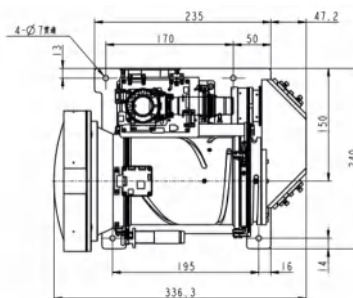
Cooled MWIR Lens

Item No:CGLE-ZL-15~300F4.0



15 ~ 300mmF4.0 Cooled MWIR Continuous Zoom Lens			
Focus Length (f)	15~300mm	Rear Working Distance	25mm
Aperture (F)	4.0	Mount Type	Flanged
Spectrum	3.7~4.8μm	Size	φ94/L118mm
FOV	35.3°X28.7°~1.87°X1.47°	Weight	1000g
Coating	AR	Working Temp	-40°C~60°C
Transmittance	>84%	Storage Temp	-40°C~80°C
Detector	640X512(15μm)	Position Feedback	Encoder/Potentiometer
Focus Mode	Motorized	IP Grade	IP67
Focus Range	5m~∞	Drive Voltage	12VDC

型号:CGLE-ZL-35~700F4.0



35 ~ 700mmF4.0 Cooled MWIR Continuous Zoom Lens			
Focus Length (f)	35~700mm	Rear Working Distance	28mm
Aperture (F)	4.0	Mount Type	Flanged
Spectrum	3.7~4.8μm	Size	φ187/L337mm
FOV	15.7°X12.6°~0.79°X0.63°	Weight	7500g
Coating	AR	Working Temp	-40°C~60°C
Transmittance	>84%	Storage Temp	-40°C~80°C
Detector	640X512(15μm)	Position Feedback	Encoder/Potentiometer
Focus Mode	Motorized	IP Grade	IP67
Focus Range	5m~∞	Drive Voltage	12VDC

Uncooled Thermal Module



384*288



640*512



1280X1024

Resolution	384*288	640*512	1280X1024
Pixel Pitch	12μm/17μm	12μm/17μm	12μm
NETD	≤50mk@25°C	≤50mk@25°C	≤50mk@25°C
Frame Frequency	50Hz	50Hz	50Hz
Response Band	8μm-14μm Long Wave		
Analogue Video	1 channel PAL/NTSC System		
Digital Video	USB,14 bit or 10 bit LVDS-H/F		
Serial Communication Interface	RS-232/UART (3.3V)		
Functional Parameter			
Brightness, Contrast	Manual/Automatic Adjustment		
Gain Control	Manual, Semi-automatic or Automatic		
Polarity	Black Heat, White Heat, Red Heat, Pseudo-colour, Sky, Stroke Polarity Reversal Display Function		
Image Enhancement	On/Off		
Image Noise Reduction	Digital Filtering Noise Reduction		
Cross Cursor	Display/Fade/Move		
Environmental Adaptation			
Operating Temperature	-40°C~+60°C		
Storage Temperature	-50°C~+70°C		
Humidity	5%~95%, Non-condensing		

Cooled Thermal Module



320*256



640*512



1280X1024

Resolution	320X256	640X512	1280X1024
Pixel Pitch	30μm	15μm	12μm
Response Band	3.7μm-4.8μm Mid-Wave		
NETD (20°C)	≤25mk	≤20mk	≤20mk
Frame Rate	25Hz/50Hz/100Hz		
Cooling Method	Stirling Cooled,Cooling Time <8min (Normal Temperature)		
Inhomogeneity	After Calibration≤0.1%		
Communication Interface	RJ45 Standard Network Port / RS422 Serial Port		
Functional Indicators			
Synchronisation	Internal Synchronisation,External Synchronisation, Automatic Switching Between Internal and External		
Brightness/Contrast	Manual/Automatic		
Mirroring	Horizontal,Vertical,Diagonal		
Image Algorithm	Dimming,Enhancement,Polarity Selection,Filtering, Non-uniform Correction,Blind Element Removal		
Power protection	Over-voltage,Over-current,Under-voltage,Reverse Connection Protection		
Environmental Adaptation			
Operating Temp	-40°C~+60°C		
Storage Temp	-45°C~+70°C		
impact	Acceleration 30g,11ms Half-sine Distribution		
Vibration	GJB 150.16A-2009A.2.3.10		

05/ Application



Forest Fire Prevention



Airport Temperature Measurement



Real CS Application



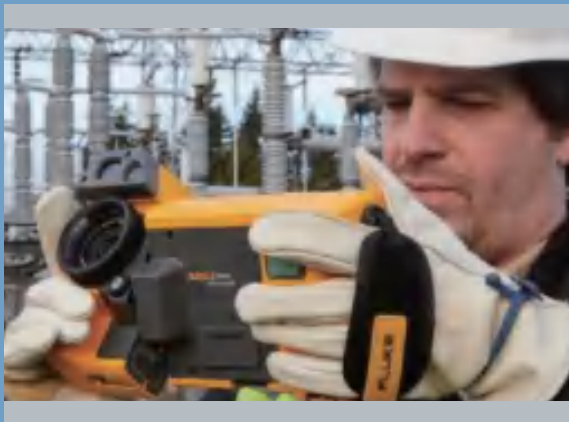
Drone Inspections



Infrared Imager Detection



Vehicle Recorder



Power Line Maintenance



Border and Navy Patrol

06/ Production Facility



Mono-crystal Furnace



Grinding and Milling Equipment



Flat Polishing Pendulum Machine



Single Point Diamond Turning Lathe



Coating Machine



High Speed Lathe



JP45-360 CNC Lathe



HVC850 Processing Center



6150B Lathe Machine



CNC Lathe



Digital Centering Instrument



Assembly Workshop

07/ Testing Facility



Surface Roughness Tester



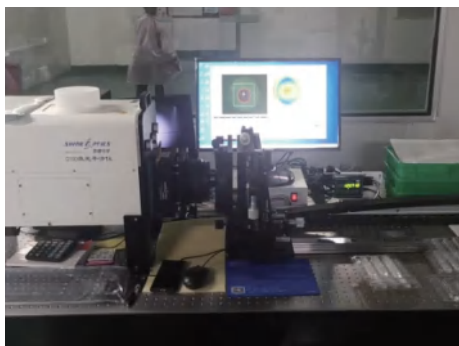
Hall Measurement Systems



Infrared Spectrophotometer



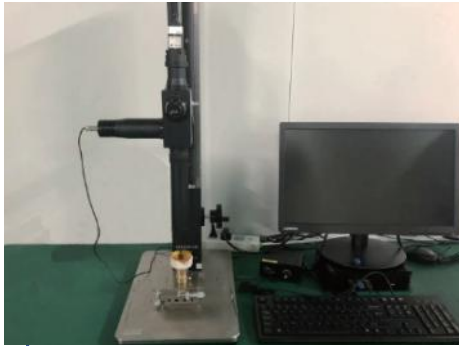
Endurance Tester



Laser Interferometer



3D Imaging Camera



**Precision Lens
Eccentric Instrument**



**Precision Lens
Eccentric Instrument**



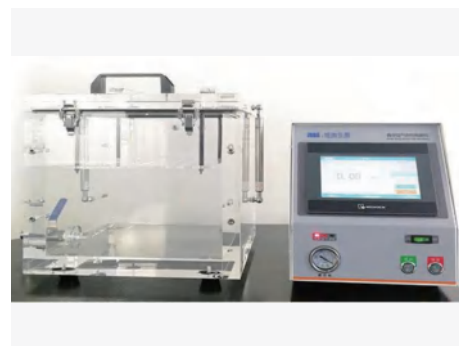
Reflecting Collimator



Tyler Hopson Profilometer



**High Low Temperature
Test Chamber**



Vacuum Leak Tester

CNGEIR

Infrared Optoelectronics Whole Industry Chain Products Supplier

Nanjing Cngeir Technology Co., Ltd.

Address : No.9 Zhongxing East Road,Lishui Economic Development

Zone,Nanjing city,Jiangsu,China

Phone:025-69782297/13799295568

E-mail address:guoyl@cngeir.com

Website:www.cngeir.com